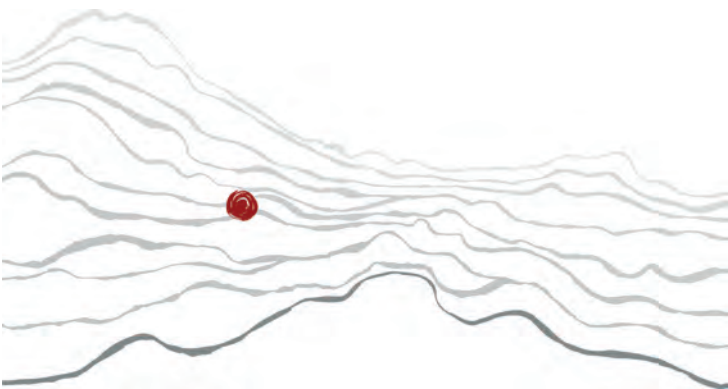


OBSIDIAN



Volcanic Estate Cabernet Sauvignon

OBSIDIAN RIDGE VINEYARD | RED HILLS LAKE COUNTY

WHAT Single Vineyard Cabernet grown at ~3,000 feet elevation on the side of a volcano.

WHERE The far northern tip of the Mayacamas Mountain Range, on a steep, north-facing slope on a flow of solid black obsidian glass.

WHO Founded 25 years ago by Peter Molnar, Arpad Molnar, and Michael Terrien when they found an abandoned walnut orchard on a ridge of glass a half mile high in the sky.

WHY Volcanic wines are just different. There is a tension, an intensity from growing on the edge.

NOTE Distinct volcanic, high-elevation character—intense color, aroma and flavor, with a freshness and minerality that typifies the site.

PAIRING Exceptionally food-friendly—ideal for guests who want a lot of flavor to pair with a range. Especially loves fire flavors - grill, roast, sear.

DIGITS 14.5% abv, 100% Hungarian oak



OBSIDIAN

OBSIDIAN RIDGE VINEYARD

